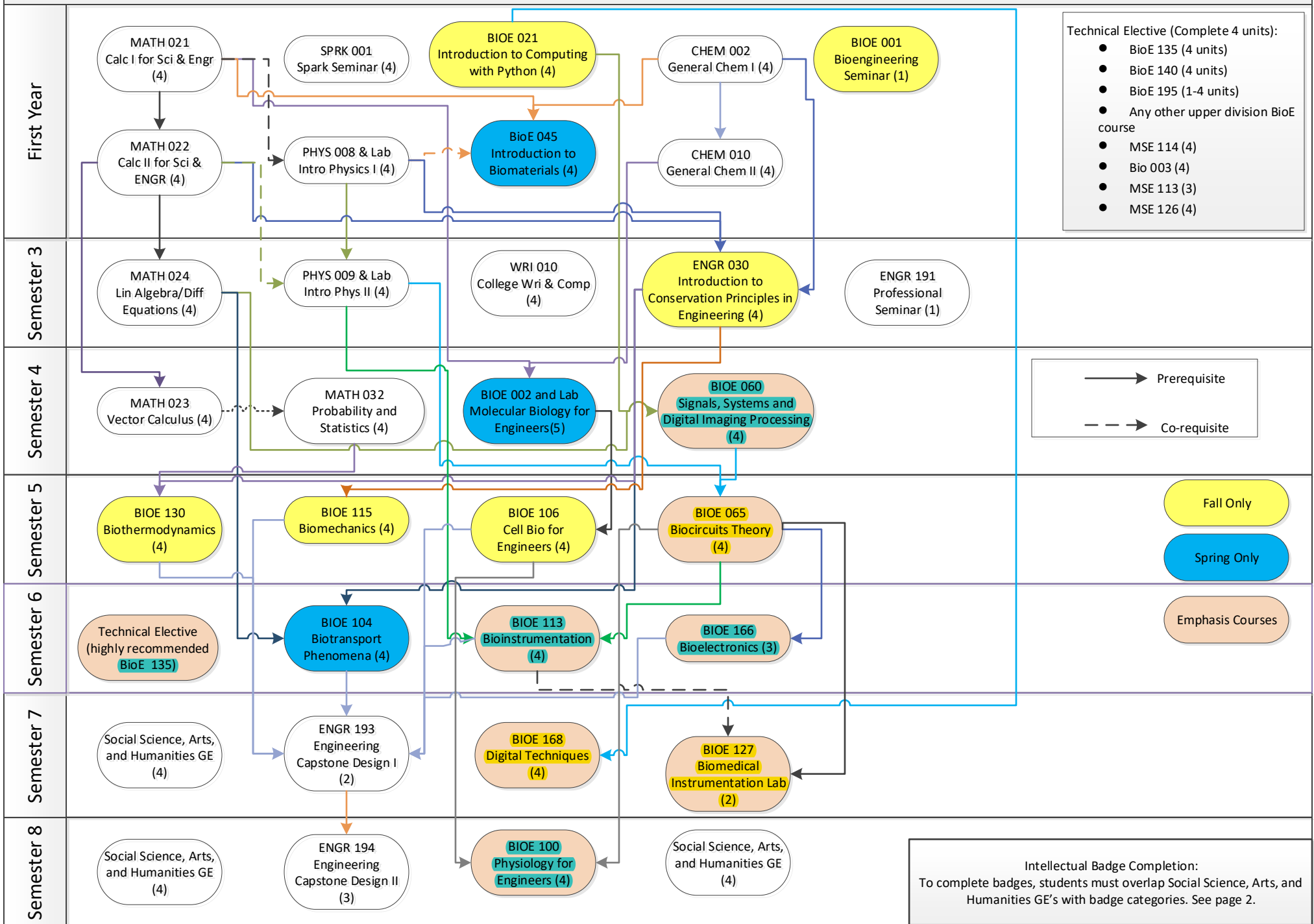


Bioengineering: Biomedical Imaging and Bioinstrumentation – Program Map – Catalog Year 2021 – 22

This guide is an unofficial document intended to be used for advising/course planning only. This document cannot be used to supersede or waive requirements listed in the UCM Catalog.



General Education Requirements – PAY ATTENTION TO

Crossroads – Take BioE 135 (This course also counts a technical elective)

AREA B: Social Science, Arts and Humanities. Students must take three courses in the area of Social Science, Arts and Humanities. At least one course must be from Social Science and one course must be from Arts and Humanities.

- Social Science – There is a place holder for this course in the flow chart. You will need to select a course. Cross selection with Intellectual Experience Badges.
- Arts and Humanities – There is a place holder for this course. You will need to select a course. Cross with Intellectual Experience Badges.
- Social Science, Arts and Humanities – There is a place holder for this course. You will need to select a course. Cross with Intellectual Experience Badges.

Intellectual Experience Badges – One course can count for a maximum of two badges.

Intellectual Experience Badge Breakdown to Maximize Graduation Requirements & Required Courses

ONE COURSE CAN SATISFY A MAXIMUM OF TWO BADGES

	Scientific Method	Literary and Textual Analysis	Media and Visual Analysis	Quantitative and Numerical Analysis	Societies and Cultures of the Past	Diversity and Identity	Global Awareness	Sustainability	Ethics
BIOE – Bioinstrumentation	Completed with Major Requirements	Completed with Major Requirements	Completed with Major Requirements	Completed with Major Requirements	Take one class that overlaps with SSHA GE	Completed with Major Requirements	Take one class that overlaps with SSHA GE	Take one class that overlaps with SSHA GE	Completed with Major Requirements

Suggested Courses to overlap Social Science, Arts and Humanities courses and Intellectual Experience Badges

- **Social Science** – ANTHR 005
- **Arts and Humanities** – CCST 060, CRES 001, CRES 076A, ENG 032, GASP 006, GASP 055B, GASP 060, GASP 076A, HIST 055, SPAN 060
- **Social Science, Arts and Humanities** – Select a Social Science, Arts, and Humanities course from <https://ge.ucmerced.edu/intellectual-experience-badges/global-awareness>. Do not select a course in Natural Science (Bio, ESS, Phys) or Engr (Engr, ME, BioE, CE, EnvE, CSE, MSE).

Subject to availability and updating, always check your Audit.