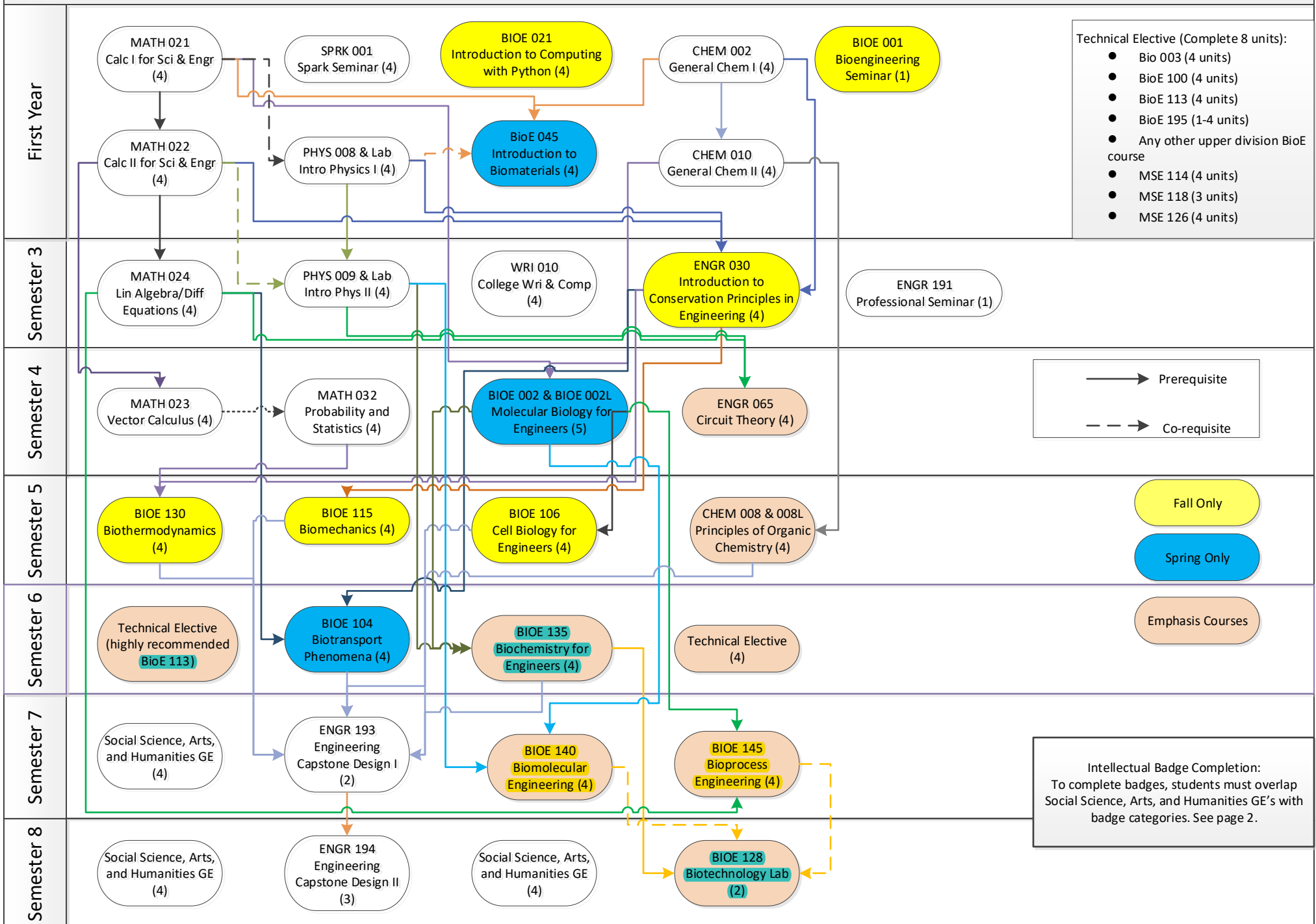


Bioengineering: Biotechnology – Program Map – Catalog Year 2021 – 22

This guide is an unofficial document intended to be used for advising/course planning only. This document cannot be used to supersede or waive requirements listed in the UCM Catalog.



General Education Requirements – PAY ATTENTION TO

Writing in the Discipline – Suggestion BioE 113 (will also count as technical elective)

AREA B: Social Science, Arts and Humanities. Students must take three courses in the area of Social Science, Arts and Humanities. At least one course must be from Social Science and one course must be from Arts and Humanities.

- Social Science – There is a place holder for this course. You will need to select a course. Cross with Intellectual Experience Badges.
- Arts and Humanities – There is a place holder for this course. You will need to select a course. Cross with Intellectual Experience Badges.
- Social Science, Arts and Humanities – There is a place holder for this course. You will need to select a course. Cross with Intellectual Experience Badges.

Intellectual Experience Badges

Intellectual Experience Badge Breakdown to Maximize Graduation Requirements & Required Courses									
ONE COURSE CAN SATISFY A MAXIMUM OF TWO BADGES									
	Scientific Method	Literary and Textual Analysis	Media and Visual Analysis	Quantitative and Numerical Analysis	Societies and Cultures of the Past	Diversity and Identity	Global Awareness	Sustainability	Ethics
BIOE - Biotechnology	Completed with Major Requirements	Completed with Major Requirements	Take one class that overlaps with SSHA GE	Completed with Major Requirements	Take one class that overlaps with SSHA GE	Completed with Major Requirements	Take one class that overlaps with SSHA GE	Completed with Major Requirements	Completed with Major Requirements

Suggested Courses to overlap Social Science, Arts and Humanities courses and Intellectual Experience Badges

- **Social Science** – ANTH 001, COGS 001, CRES 070, ECON 001, GASP 070A, GASP 070B, GASP 070C, PH 001, PH 005, POLI 001, POLI 002, POLI 003, POLI 005, POLI 006, PSY 001, SOC 001
- **Arts and Humanities** – CCST 060, CRES 001, CRES 076A, ENG 032, GASP 006, GASP 055B, GASP 060, GASP 076A, HIST 055, SPAN 050, SPAN 060
- **Social Science, Arts and Humanities** – Select a Social Science, Arts, and Humanities course from <https://ge.ucmerced.edu/intellectual-experience-badges/global-awareness>. Do not select a course in Natural Science (Bio, ESS, Phys) or Engr (Engr, ME, BioE, CE, EnvE, CSE, MSE).

Subject to availability and updating, always check your Audit.