

We are a Class Called...



ENGINEERING

SERVICE

LEARNING



ENGINEERING
SERVICE LEARNING
PROVIDES MULTIPLE
SERVICES THAT BUILD
STUDENTS INTO
COMPETITIVE
CANDIDATES FOR
FUTURE EMPLOYERS.

STUDENT
DEVELOPMENT

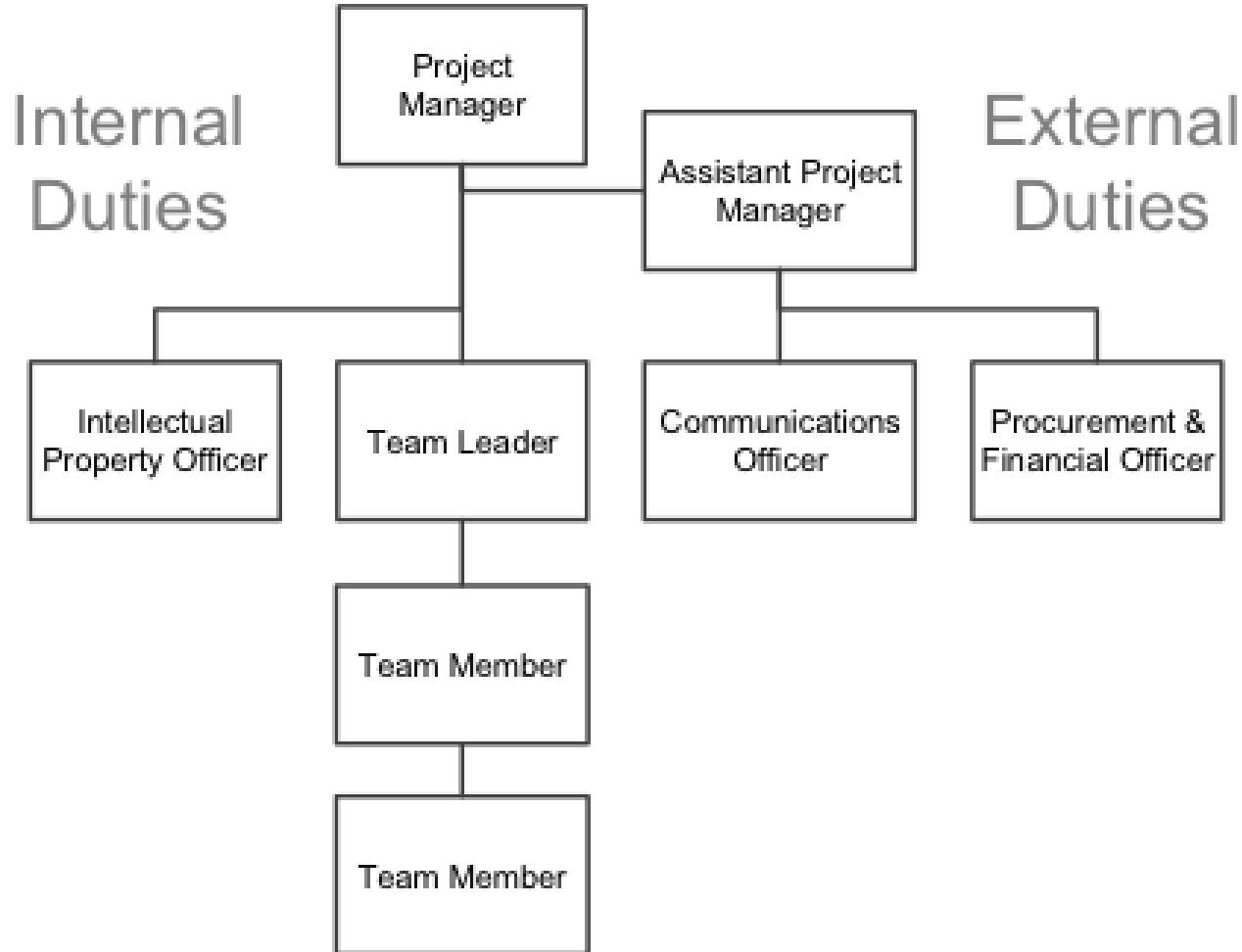
REAL-WORLD
EXPERIENCE



OVERVIEW

- ▶ Students solve problems for Non-Profit Organizations
- ▶ The teams are designed to function like an industry team.
- ▶ Project Protect has their first prototype of a Mobile App designed to provide health information
- ▶ LEED Lab Team collects water data provided by Facilities to gain more credits for the Operations LEED Certification.
- ▶ The Unmanned Aerial Vehicle Engineering Service Learning team (UAV) is working to design and implement a UAV system that will provide local, small-scale farmers with an efficient method of disease detection and crop management through precision techniques.

TEAM STRUCTURE





“I LEARNED HOW TO COLLABORATE WITH OTHERS AND DELEGATING TASKS TO PRODUCE TREMENDOUS PROGRESS WITH THE TEAM.”

Eric Sosa

PROFESSIONAL DEVELOPMENT



“I LEARNED
HOW TO BE
SELF
MOTIVATED
AND HOW TO
MAKE MY
OWN
DEADLINES.”
Brenda Yu



“I LEARNED HOW TO COMMUNICATE WITH TEAM AND HOW TO DELEGATE TASKS. THE CHALLENGE WAS FIGURING OUT WHAT WE WERE DOING. WE FIGURED OUT THAT WE HAD A GIANT PROJECT AND WE HAD TO BUILD THE FOUNDATION FOR IT, WHICH COULDN'T HAVE BEEN DONE WITHOUT COMMUNICATING.”

**Andrew John De
Los Santos**



WE POSITIVELY IMPACT
THE ENTIRE CAMPUS

IMPACT







WE ENCOURAGE WOMEN
TO TAKE LEADERSHIP
ROLES TO FACILITATE
FUTURE OPPORTUNITIES
FOR WOMEN.

**WOMEN
LEADERSHIP**



“I LEARNED HOW TO WORK WITH PEOPLE FROM DIFFERENT BACKGROUNDS. AS A MANAGING MAJOR, I LOOKED FOR RISKS WHILE THE ENGINEERING MAJORS LOOKED FOR FACTS. THIS WAS A GOOD BALANCE.”

Maya Martinez



Purpose of Center for Career and Professional Advancement

- **Student Professional Development:** Résumé, Cover Letter, Curriculum Vitae, Interview Prep, Conference/Trade-Show/Career-Fair Prep, Professional Etiquette, Career Direction
- **Strategic Career Planning:** Technical Skills, Experiential Learning, Certifications, Industry Trends, Events , Internships
- **Pioneering Workshops:** Flash Talks, Engineer-in-Training Panel, Working the Show, Engineering Boot Camp, Research Experiences for Undergraduates at the National Science Foundation
- **Proactive & Student-Oriented:** Centered on Student Competitiveness and helping advance YOU to the next step

Recommended Experience Strategy

- **First-Year:** Externships, Research & Career Exploration, Join 1-2 Engineering Organizations
- **Second Year:** Service Learning, Internships, Research Experiences for Undergraduates (REU at NSF), Study Abroad
- **Third Year:** Internships, Field Research, REUs, Co-Ops, Study Abroad Opportunities
- **Fourth Year:** Entry-Level Internships & Careers Applications

Welcome to the *School of Engineering*



Engr-advising.ucmerced.edu

Orientation Learning Outcomes

Advising Services- services; assignments; location; website; office procedures

Degree planning- introduction to MyAudit; understand policies; unit load; course sequencing/timing

Academic Success- understand study times; faculty expectations; high school vs. college

Development- be aware of School resources

Registration- How to; know errors; understand schedule of classes

School of Engineering

Nadia
Margison

Academic Advisor -
Last Name A - E

Christina
Mayo

Academic Advisor –
Last Name F - L

Phung
Colvin

Academic Advisor –
Last Name M - Q

Karla
Gonzalez

Academic Advisor -
Last Name R - Z



What's an Academic Advisor?

We clarify
university and
school policies

We guide and
point you to the
right resources

COME TO US
ABOUT ALL
ASPECTS OF YOUR
BOBCAT
EXPERIENCE!!

Prioritize the
advice of your
Academic Advisor
over friends and
classmates

Important Links

Engr-advising.ucmerced.edu

- Appointments and Walk-in Hours
- Policies
- Major info, flow charts, etc.
- Engineering specific forms

Registrar.ucmerced.edu

- All university policies, procedures, deadlines
- All university forms

The screenshot shows the UC Merced Engineering Advising website. The header includes the UC Merced logo and the title 'Engineering Advising'. A navigation bar contains links for 'About', 'Majors', 'Policies', 'Registration', 'Forms', 'Resources', 'See My Advisor', 'FAQ', and 'Newsletter'. Below the navigation bar, there is a 'Get in touch' section with a 'Read More' button. To the right, there is a 'Weekly Walk-In Hours' section with a 'See your advisor's hours' link. Below that, there is a 'Valuable Links' section with links for 'Who is my advisor?' and 'Engineering general education information'. A Facebook widget for 'School of Engineering Advising - UC Merced' is also visible.

Don't "Google"
it – bookmark
these sites!

How to Get Assistance

STEP 1 → Do your homework

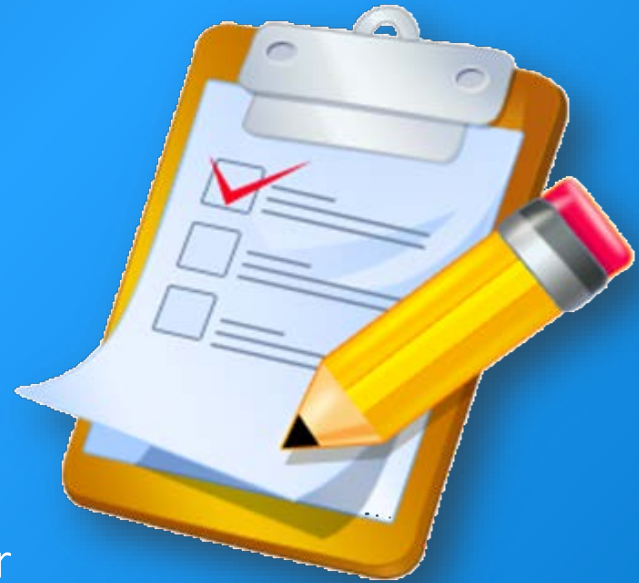
- ❖ Utilize resources
 - ❖ Engineering advising website
 - ❖ MyAudit
 - ❖ Course schedule

STEP 2 → Personalize and Plan

- ❖ Prepare your course options
- ❖ Identify academic concerns
- ❖ Explore major/minor options
- ❖ Make decisions about the upcoming semester

STEP 3 → Meet with an Advisor

- ❖ Items to bring: current copy of MyAudit and planning info
- ❖ Advisors help with course selection and not with creating schedules



Communication with Engr Staff

When emailing your advisor always include the following in your message:

The screenshot shows an Outlook email composition window titled "Registration Question - Message (HTML)". The ribbon includes FILE, MESSAGE, INSERT, OPTIONS, FORMAT TEXT, REVIEW, and ADOBE PDF. The MESSAGE ribbon is active, showing options like Paste, Bold, Italic, Underline, Font Color, Paragraph, Address Book, Check Names, Attach File, Attach Item, Signature, Follow Up, High Importance, Low Importance, Zoom, and Apps for Office. The email fields are filled with the following information:

- From:** rbobcat@ucmerced.edu (Callout: "Make sure to email us from your official ucmerced.edu email account")
- To:** soeadvising@ucmerced.edu
- Cc:** (Empty)
- Bcc:** (Empty)
- Subject:** Registration Question (Callout: "Include a subject")

The email body contains the following text:

Good morning SOE advising, (Callout: "Include your full name, student ID number, and currently declared major")

My name is Rufus Bobcat (100200300) and I am a Mechanical Engineering student. I cannot register in Phys 009 because it conflicts with WRI 010, are there any alternatives? I hope to hear from you soon, thank you.

Sincerely,

Rufus Bobcat
rbobcat@ucmerced.edu
Student ID: 100200300

(Callout: "Include a detailed message. If inquiring about a specific course, include course number")

Majors



Bioengineering



Computer Science and
Engineering



Environmental Engineering



Material Science and
Engineering



Mechanical Engineering

Change of Major within the School of Engineering can be done, as long as you have a UCM GPA of 2.0 or higher.

Not sure what kind of engineer you want to be?

Utilize your resources:

- Talk to **faculty during office hours**
- Explore **research** opportunities
- Enroll in **Service Learning**: real world experience
- Check out the **Engineering Student Orgs**
- Visit the CCPA: <http://hire.ucmerced.edu/>
- Visit UROC: <http://uroc.ucmerced.edu/>



Adding Courses

0 and 1st week :

- completed on-line by student
- (Aug. 24 – Aug. 30)

2nd and 3rd week:

- completed a 'Add/Drop Form' with instructor's signature
- (Aug. 31 – Sept. 14)

4th week to 10th week:

- by petition only.
- Requires approval of the instructor, the Dean, the Petition Committee and a fee is assessed (after Sept. 14)



Forms available at: registrar.ucmerced.edu/forms

Dropping Courses

0 – 3rd Week:

- Drop online without paying a fee (no “W”)
- Last day to web drop (online)
Wednesday, September 14th @ 4pm.

4th week until the 10th week

- Use Course Withdrawal Form.
- Requires approval of the instructor and the Dean and a fee is assessed.
- Will receive “W.” (Sept. 15 - Nov. 2).



*You MUST have **extreme** circumstances to drop a course **after the 10th week of instruction** (failing a course is not an extreme circumstance nor is changing your major).

Forms available at: registrar.ucmerced.edu/forms

Repeat Policy

- Students may only repeat a course once after obtaining a D+ or lower.
- Many math and science courses have enrollment restrictions, meaning that you may not be able to repeat the course until all new eligible students have had the opportunity to enroll in that particular class.
- A student may repeat only those courses in which a grade of D, F, or Not Passed was received.

Courses in which a grade of D or F has been earned may not be repeated on a Passed/Not Passed basis.



Stay Connected

- ❑ Check your UC Merced email regularly
- ❑ Student Handbook available in your flash drive.
 - Includes: University info, SoE major requirements & other important academic information.
- ❑ Engineering E-Newsletter
 - Bi-weekly newsletter emailed to your UCM email
 - Informs you on upcoming events and deadlines
- ❑ Make an appointment to see your advisor:

<http://enr-advising.ucmerced.edu/see-my-advisor/appointment>

Catalog

- You are required to complete all courses listed in the catalog for the 2016-17 Academic Year
- Courses and their requirements can and do change (pre-reqs), so make sure you communicate with your advisor regularly
- Visit the School of Engineering requirements website to find out current requirements for your major.

Get Involved!

Research

Undergraduate Research Opportunities Center (UROC)
uroc.ucmerced.edu



Engineering Specific

Engineering Advising Website Internships and Research Opportunities
enr-advising.ucmerced.edu/resources/career-resources/internships-research-opportunities

Engineering Faculty Website
<http://engineering.ucmerced.edu/faculty>

Internships

CCPA (hire.ucmerced.edu)



Washington Center (UCDC)
<http://ucdc.ucmerced.edu>



Co-curricular Opportunities

Study Abroad

<http://studyabroad.ucmerced.edu>



Professional Engineering Organizations

enr-advising.ucmerced.edu/about/student-organizations



Preparing for Health Careers (Pre-Health Advising)

- Assist in course selection
- Guidance in becoming a competitive applicant
- Info workshops every semester required before making an appointment
- Pre-Health Sample Plans available!

Sign up at <http://prehealth.ucmerced.edu>
More info contact: prehealth@ucmerced.edu



- **List requirements to complete:**
 - major
 - minor
- **List courses:**
 - Taken
 - In progress
 - Left
- Based on **catalog year** you entered
- Student **MUST** bring a printed copy of their MyAudit when meeting with their academic advisor

You are here > **Audit** [MyAudit Help](#) [View Course History](#) [Close Window](#)

UCMERCED **And here is your Audit!!** **MyAudit**

PREPARED: 03/06/14 - 13:10
PROGRAM CODE: U1BS_BENG CATALOG YEAR: 2010-2011
This degree audit is unofficial. See your advisor.
BS Bioengineering

Audit **Categories**

Category	Hours	GPA
UCM Requirements	15	3.70
School Requirements	45	2.31
Major	75	3.00

Hours: 0 15 30 45 60 75
GPA: 0.0 2.0 4.0

Unfulfilled Planned
In Progress Complete

Open All Sections Close All Sections [Printer Friendly](#)

YOUR ADVISOR(s):
Major: Maria Serrano (Primary)

AT LEAST ONE REQUIREMENT HAS NOT BEEN SATISFIED

Courses must be taken for a letter grade unless the course is offered Pass/No Pass only. See your advisor if you are considering a Pass/No Pass option for any course.

✗ Minimum Unit Requirement
A minimum of 120 units is required to earn a UC Merced bachelor's degree; however, some majors have total unit requirements higher than this general minimum. Please consult your advisor and your UC Merced Catalog.

EARNED: 75.0 HOURS
IN-PROCESS: 20.0 HOURS
--> NEEDS: 25.0 HOURS

<http://registrar.ucmerced.edu/myaudit>

Orientation Learning Outcomes

Advising Services- services; assignments; location; website; office procedures

Degree planning- introduction to MyAudit; understand policies; unit load; course sequencing/timing

Academic Success- understand study times; faculty expectations; high school vs. college

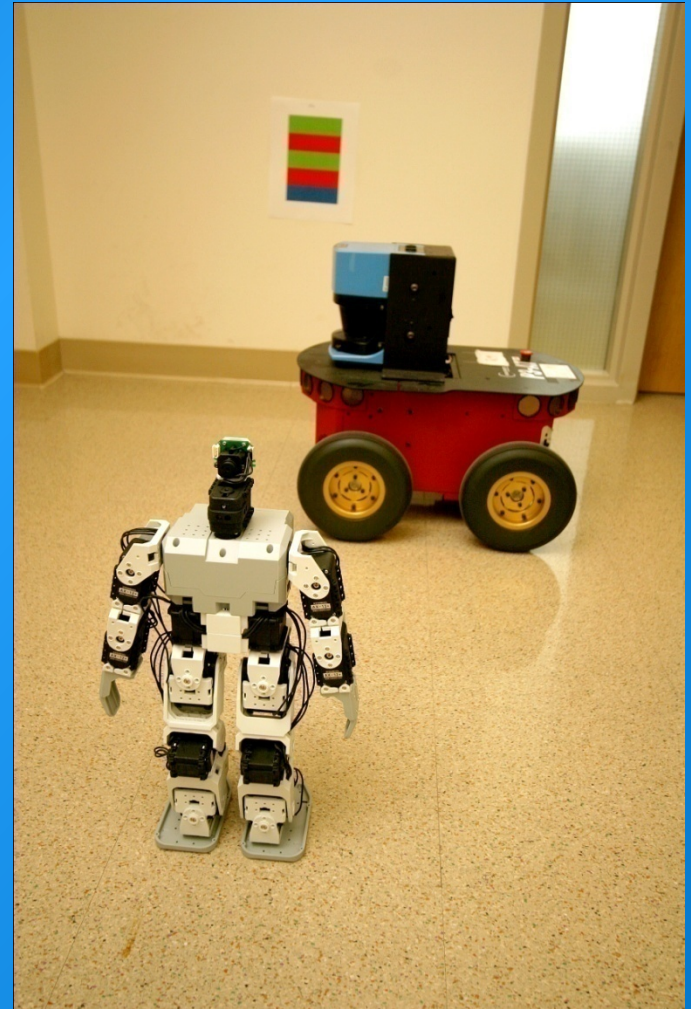
Development- be aware of School resources

Registration- How to; know errors; understand schedule of classes

Enrolling In Courses

Enrollment Requirements

- **Full-Time Status:** Students must enroll in at least 12 units each semester
- **Minimum Progress:** Students must complete 24 units each academic year
- If you think you may have difficulty enrolling as a full-time student, please contact your advisor ASAP.



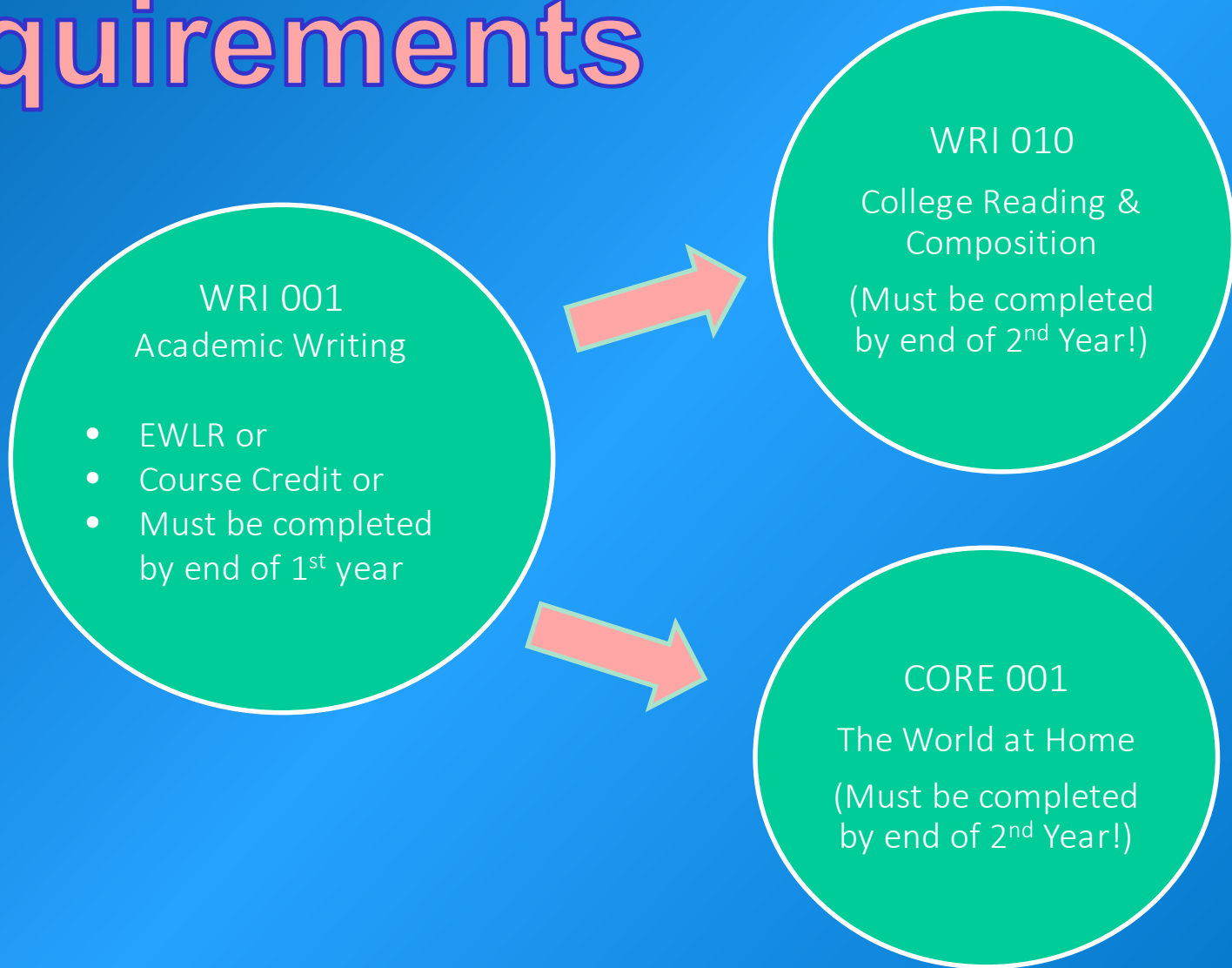
Engineering Normal Progress

To be able to make normal progress, you must:

- Register in at least 12 units per semester and of these 12 units, two classes must be major prep (math/science), ENGR or major specific, technical requirements.
- In order to make progress, engineering students should take an average of 15 units per semester. Students may not fall more than 1 semester behind in units.
- A maximum of 10 semesters is allowed to complete your engineering degree

Student who fail to achieve normal progress are subject to dismissal.

Writing Requirements



Math

- All engineering students must take a math class their first semester!!
- Your math class is based on your UC Merced math placement exam, AP/IB scores only, or approved college math courses taken before coming to UCM.
- Math 005 (Preparatory Calculus), Math 021 (Calculus I for Physical Sciences & Engineering), or an Advanced calculus class.
- Preparatory Calculus is a blended class – lecture is online and discussion section is in person

Registration Schedule

UCMERCED
School of Engineering
Orientation 2013



Student Name: Merced Bobcat

UCM ID#: 100123456

Major: Mechanical Engineering

Date: July 11, 2013

CRN	SUBJECT	COURSE NUMBER	DISC, LAB, or LECT	DAYS	TIME	UNITS	PRE-REQUISITE OVERRIDE PERMITTED
	Math	021	Lect			4	
	Math	021	Disc			--	
	Phys	008	Lect			4	
	Phys	008	Disc			--	
	Phys	008	Lab			--	
	Wri	001	Disc			4	
	Social Science or Arts/Hum GE					4	

Placement Exam Information:

Math Placement: Your MATH Exam Score: 21
 MATH 005: a score of 19 or below
 MATH 021: a score of 20 or higher

Chemistry Placement: Your CHEM Exam Score: 20
 A combined score of 40 or above on the Chemistry AND the Math Placement Exam is needed to place into General Chemistry (CHEM 002)

Advising Notes:

Advising Approval:

Class Schedule for Fall Semester 2014

NOTE: Schedule Subject to Change

CRN CODES
Physics

COURSE

CRN	Course #	Course Title	Units	Actv	Days	Time	Bldg/Rm	Start - End	Instructor	Max Enrl	Act Enrl	Seats Avail
35194	PHYS-006-01	The Cosmos, Science and You	4	LECT	TR	12:00-1:15pm	KOLLIG 217	28-AUG 12-DEC	Van Breugel, Wil	60	9	51
		Linked Course and Discussion and Lab		EXAM	R	8:00-11:00am	KOLLIG 217	18-DEC 18-DEC				
35195	PHYS-006-02D	The Cosmos, Science and You	0	DISC	W	9:30-10:20am	CLSSRM 286	28-AUG 12-DEC	Staff	30	2	28
35196	PHYS-006-03D	The Cosmos, Science and You	0	DISC	W	10:30-11:20am	CLSSRM 286	28-AUG 12-DEC	Staff	30	7	23
30244	PHYS-008-01	Physics I Must Also Register for a Corresponding Lab and Discussion	4	LECT	TR	3:00-4:15pm	CLSSRM 120	28-AUG 12-DEC	Stone, Toni	120	111	9
				EXAM	F	6:30-9:30pm	CLSSRM 102	19-DEC 19-DEC				
30245	PHYS-008-02D	Physics I	0	DISC	W	9:30-11:20am	CLSSRM 276	28-AUG 12-DEC	Staff	24	23	1
30246	PHYS-008-02L	Physics I	0	LAB	M	9:30-11:20am	SCIENG 107	28-AUG 12-DEC	Staff	24	23	1
30985	PHYS-008-06D	Physics I	0	DISC	W	5:30-7:20pm	CLSSRM 129	28-AUG 12-DEC	Staff	24	16	8
30986	PHYS-008-06L	Physics I	0	LAB	M	5:30-7:20pm	SCIENG 107	28-AUG 12-DEC	Staff	24	16	8

Linked Course and Discussion and Lab

PAIRED DISCUSSION & LAB

Choose ONE Pair

Course Type

- Lecture (LECT): traditional professor presentation
- Laboratory (LAB) and Studio (STDO):hands-on learning
- Discussion (DISC): seminar-style learning driven by student participation
- One class could potentially have 3 CRNs!

- M: Monday
- T: Tuesday
- W: Wednesday
- R: Thursday
- F: Friday

- Course Registration Number (CRN)
 - Used to register for course
 - Click to see course description and prerequisites

Lets look at an example of your
fall schedule

	Sunday	Monday	Tuesday	Wednesday	Thursday	Friday	Saturday
8:00 AM							
9:00 AM							
10:00 AM							
11:00 AM							
12:00 PM							
1:00 PM							
2:00 PM							
3:00 PM							
4:00 PM							
5:00 PM							
6:00 PM							
7:00 PM							
8:00 PM							
9:00 PM							

	Sunday	Monday	Tuesday	Wednesday	Thursday	Friday	Saturday
8:00 AM							
		Math 021		Math 021		Math 021	
9:00 AM		Lecture		Lecture		Lecture	
10:00 AM							
11:00 AM					Math 021		
					Discussion		
12:00 PM							
1:00 PM							
2:00 PM							
3:00 PM							
4:00 PM							
5:00 PM							
6:00 PM							
7:00 PM							
8:00 PM							
9:00 PM							

	Sunday	Monday	Tuesday	Wednesday	Thursday	Friday	Saturday
8:00 AM							
		Math 021		Math 021		Math 021	
9:00 AM		Lecture	Phys 008	Lecture	Phys 008	Lecture	
			Lecture		Lecture		
10:00 AM							
11:00 AM					Math 021		
					Discussion		
12:00 PM		Phys 008		Phys 008			
		Lab		Discussion			
1:00 PM							
2:00 PM							
3:00 PM							
4:00 PM							
5:00 PM							
6:00 PM							
7:00 PM							
8:00 PM							
9:00 PM							

	Sunday	Monday	Tuesday	Wednesday	Thursday	Friday	Saturday
8:00 AM							
		Math 021		Math 021		Math 021	
9:00 AM		Lecture	Phys 008	Lecture	Phys 008	Lecture	
			Lecture		Lecture		
10:00 AM							
11:00 AM			CORE 001		Math 021		
			Lecture		Discussion		
12:00 PM		Phys 008		Phys 008			
		Lab		Discussion			
1:00 PM							
2:00 PM							
3:00 PM							
						CORE 001	
4:00 PM						Lecture	
5:00 PM							
6:00 PM							
7:00 PM							
		CORE 001		CORE 001			
8:00 PM		Discussion		Discussion			
9:00 PM							

	Sunday	Monday	Tuesday	Wednesday	Thursday	Friday	Saturday
8:00 AM							
		Math 021		Math 021		Math 021	
9:00 AM		Lecture	Phys 008	Lecture	Phys 008	Lecture	
			Lecture		Lecture		
10:00 AM							
11:00 AM			CORE 001		Math 021		
			Lecture		Discussion		
12:00 PM		Phys 008		Phys 008			
		Lab		Discussion			
1:00 PM							
2:00 PM		General		General		General	
		Education		Education		Education	
3:00 PM							
						CORE 001	
4:00 PM						Lecture	
5:00 PM							
6:00 PM							
7:00 PM							
		CORE 001		CORE 001			
8:00 PM		Discussion		Discussion			
9:00 PM							

	Sunday	Monday	Tuesday	Wednesday	Thursday	Friday	Saturday
8:00 AM		Breakfast	Breakfast	Breakfast	Breakfast	Breakfast	
		Math 021		Math 021		Math 021	
9:00 AM		Lecture	Phys 008	Lecture	Phys 008	Lecture	
	Breakfast		Lecture		Lecture		
10:00 AM							
		Lunch		Lunch			
11:00 AM			CORE 001		Math 021		
			Lecture		Discussion		Brunch
12:00 PM		Phys 008	Lunch	Phys 008		Lunch	
		Lab		Discussion	Lunch		
1:00 PM	Lunch						
2:00 PM		General Education		General Education		General Education	
3:00 PM							
						CORE 001	
4:00 PM						Lecture	
5:00 PM							
	Dinner				Dinner	Dinner	
6:00 PM			Dinner				Dinner
		Dinner		Dinner			
7:00 PM							
		CORE 001		CORE 001			
8:00 PM		Discussion		Discussion			
9:00 PM							

	Sunday	Monday	Tuesday	Wednesday	Thursday	Friday	Saturday
8:00 AM		Breakfast	Breakfast	Breakfast	Breakfast	Breakfast	
		Math 021		Math 021		Math 021	
9:00 AM		Lecture	Phys 008	Lecture	Phys 008	Lecture	
	Breakfast		Lecture		Lecture		
10:00 AM							
		Lunch		Lunch			
11:00 AM			CORE 001		Math 021		
			Lecture		Discussion		Brunch
12:00 PM		Phys 008	Lunch	Phys 008		Lunch	
		Lab		Discussion	Lunch		
1:00 PM	Lunch						
2:00 PM		General		General		General	
		Education		Education		Education	
3:00 PM							
						CORE 001	
4:00 PM						Lecture	
5:00 PM							
	Dinner				Dinner	Dinner	
6:00 PM			Dinner				Dinner
		Dinner		Dinner			
7:00 PM							
		CORE 001		CORE 001			
8:00 PM		Discussion		Discussion			
9:00 PM							

Resources

- STEM Resource Center
Tutoring in STEM courses
Resource Center
<http://stemresourcecenter.ucmerced.edu/>



- Bright Success Center
Workshops
Tutoring
Fiat Lux
<http://learning.ucmerced.edu/brightsucces-center-home>

- Counseling and Psychological Services (CAPS) professional services that care for the emotional, personal, and social wellbeing of students
<http://counseling.ucmerced.edu/>



Disability Services

Student Services Building, suite 230

Contact: (209) 228-6996

Accommodations for individuals who have a medically documented need:

Those with **learning disabilities**

Those who need **mobility assistance**

Those who need **proctoring services**

Those who need **note taking services**

Those who need **transcription services**

Contact Us

UCMERCED
UNIVERSITY OF CALIFORNIA, MERCED

Engineering Advising

Apply Visit Info

About ▾ Majors ▾ Policies ▾ Registration ▾ Forms ▾ Resources ▾ See My Advisor ▾ FAQ

Get in touch
Find your advisor's info.
[Read More](#)

Appointment
Walk-ins: 10 - 11:45 a.m.
Wednesdays and Thursdays: 2 - 4 p.m.

****Disclaimer**** These are **general** walk-in hours, see your advisor's hours for more details.

Valuable Links

Located:

Science & Engineering 2
Room 315

For Appointments:

Engr-advising.ucmerced.edu

→ See My advisor

→ Appointment



Class Schedule for Fall Semester 2016

NOTE: Schedule Subject to Change

Look Up CRNs

- Go to registrar.ucmerced.edu/go/schedule
- Select “Fall Semester 2016”, select department and View Class Schedule
- Look for classes and write CRNs on your registration sheet

Add Classes Worksheet

CRNs

Submit Changes Class Search Reset

Register for Classes

- Login into my.ucmerced.edu
- Select “myRegistration” on the left hand side
- Select “Register/Add/Drop Classes”
- Select “Fall Semester 2016” and press submit
- Enter CRNs and press “Submit Changes”

Final Steps

- Have staff member review you schedule
- Prehealth? Listerve:
https://mailman.ucmerced.edu/mailman/listinfo/healthprof_advising-l
- Take orientation evaluation (both online & on form)
- Wait for Orientation staff and go to Farewell

