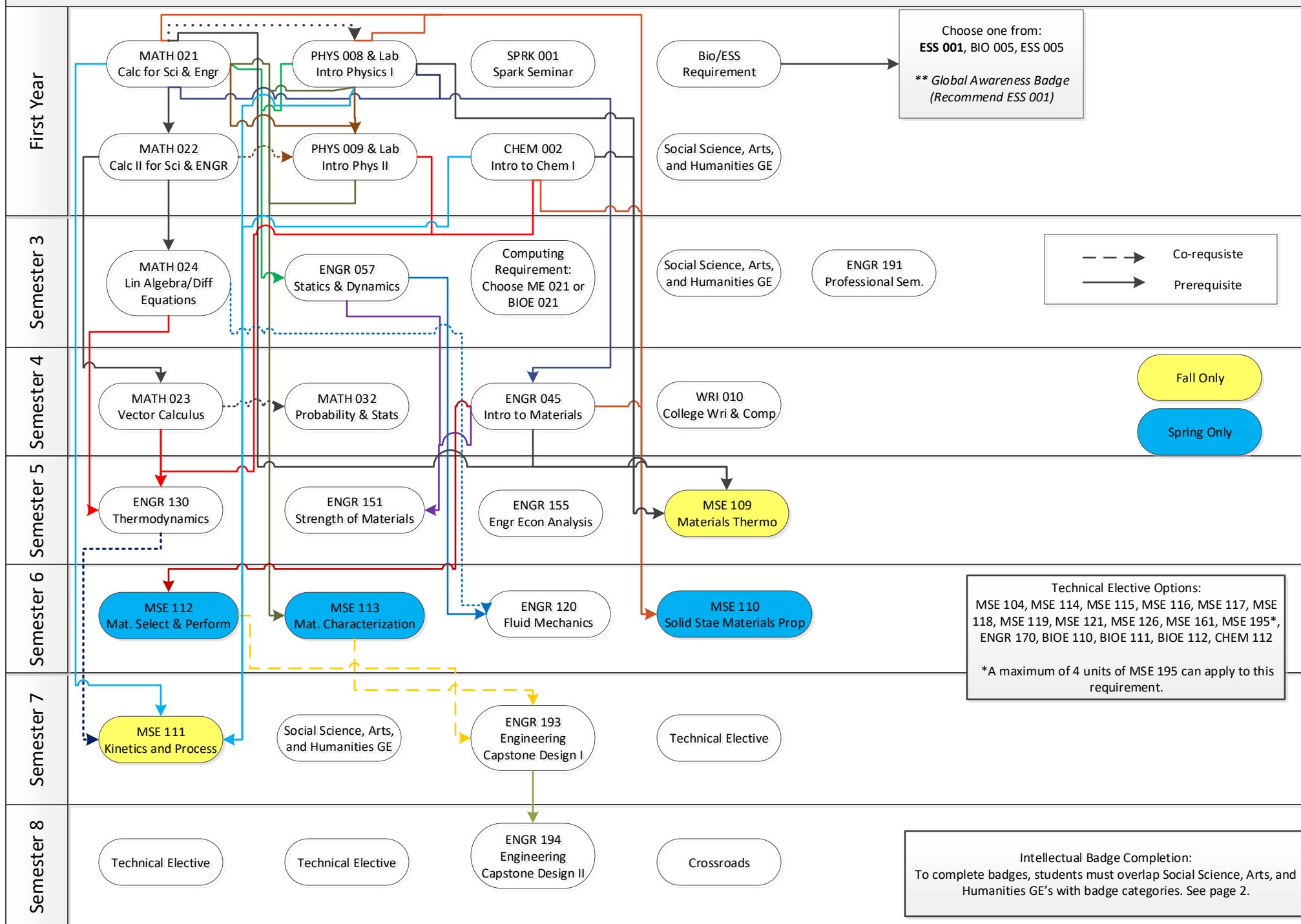


Materials Science and Engineering – Program Map – 2021 – 22

This guide is an unofficial document intended to be used for advising/course planning only. This document cannot be used to supersede or waive requirements listed in the UCM Catalog unless approved by your advisor.



General Education Requirements – PAY ATTENTION TO

Crossroads – There is a place holder for this course. You will need to select a course.

AREA B: Social Science, Arts and Humanities. Students must take three courses in the area of Social Science, Arts and Humanities. At least one course must be from Social Science and one course must be from Arts and Humanities.

- Social Science – There is a place holder for this course. You will need to select a course. Cross with Intellectual Experience Badges.
- Arts and Humanities – There is a place holder for this course. You will need to select a course. Cross with Intellectual Experience Badges.
- Social Science, Arts and Humanities – There is a place holder for this course. You will need to select a course. Cross with Intellectual Experience Badges.

Intellectual Experience Badges – One course can count for a maximum of two badges.

Intellectual Experience Badge Breakdown to Maximize Graduation Requirements & Required Courses

ONE COURSE CAN SATISFY A MAXIMUM OF TWO BADGES

	Scientific Method	Literary and Textual Analysis	Media and Visual Analysis	Quantitative and Numerical Analysis	Societies and Cultures of the Past	Diversity and Identity	Global Awareness	Sustainability	Ethics
MSE	Completed with Major Requirements	Take one class that overlaps with SSHA GE	Take one class that overlaps with SSHA GE	Completed with Major Requirements	Take one class that overlaps with SSHA GE	Take one class that overlaps with SSHA GE	Take ESS 001 (counts in major towards engr sci)	Completed with Major Requirements	Completed with Major Requirements

Suggested Courses to overlap Social Science, Arts and Humanities courses and Intellectual Experience Badges

- **Social Science** – ANTH 003, COGS 005, SPAN 050
- **Arts and Humanities** – CCST 060, CHN 004, CRES 001, CRES 020, CRES 027, ENG 011, ENGR 018, ENG 020, ENG 021, ENG 032, ENG 033, ENG 056, ENG 066, ENG 067, FRE 003, FRE 004, GASP 006, GASP 007, GASP 059, GASP 060, HIST 010, HIST 011, HIST 016, HIST 017, HIST 039, HIST 040, HIST041, HIST 042, HIST 055, HIST 060, HIST 070, HIST 071, JPN 003, JPN 004, PHIL 002, SPAN 003, SPAN 004, SPAN 010, SPAN 011, SPAN 050, SPAN 060
- **Social Science, Arts and Humanities** – Select a Social Science, Arts, and Humanities course.

Subject to availability and updating, always check your Audit.