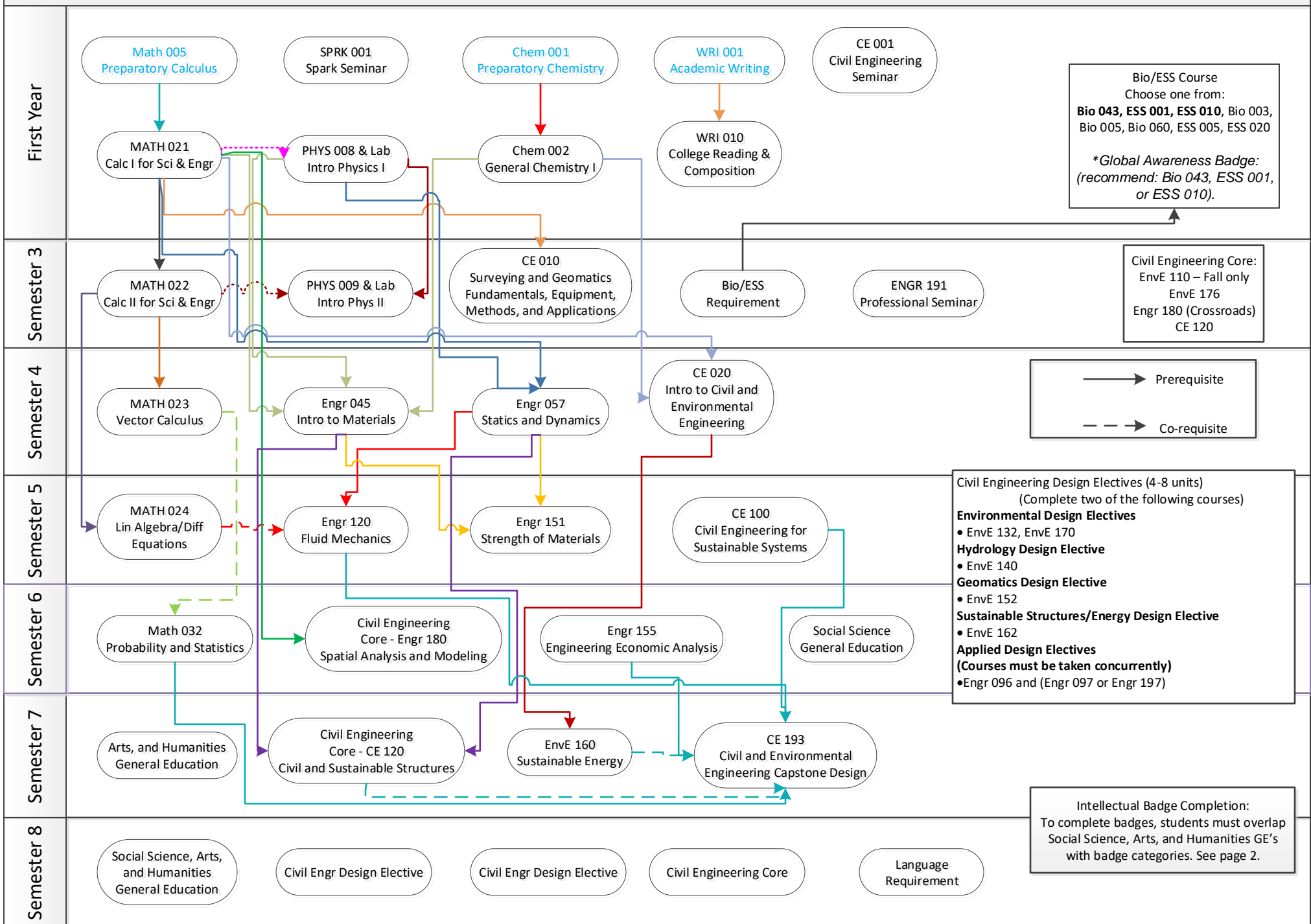


Civil Engineering – Program Map – Catalog Year 2021 – 22 – Math 005

This guide is an unofficial document intended to be used for advising/course planning only. This document cannot be used to supersede or waive requirements listed in the UCM Catalog.



General Education Requirements – PAY ATTENTION TO

Crossroads – We have planned Engr 180 as a CORE CE course. This course covers your crossroads requirement and some intellectual badges.

Writing in the Discipline – There is a place holder for this course in the flow chart. You will need to select a course.

Language Course – There is a place holder for this course in the flow chart.

- We suggest ME 021 or CSE 019

AREA B: Social Science, Arts and Humanities. Students must take three courses in the area of Social Science, Arts and Humanities. At least one course must be from Social Science and one course must be from Arts and Humanities.

- Social Science – There is a place holder for this course in the flow chart. You will need to select a course. Cross selection with Intellectual Experience Badges.
- Arts and Humanities – There is a place holder for this course. You will need to select a course. Cross with Intellectual Experience Badges.
- Social Science, Arts and Humanities – There is a place holder for this course. You will need to select a course. Cross with Intellectual Experience Badges.

Intellectual Experience Badges – One course can count for a maximum of two badges.

Intellectual Experience Badge Breakdown to Maximize Graduation Requirements & Required Courses									
ONE COURSE CAN SATISFY A MAXIMUM OF TWO BADGES									
	Scientific Method	Literary and Textual Analysis	Media and Visual Analysis	Quantitative and Numerical Analysis	Societies and Cultures of the Past	Diversity and Identity	Global Awareness	Sustainability	Ethics
CE	Completed with Major Requirements	Take one class that overlaps with SSHA GE	Take ENGR 180 (Counts in major towards Civil Core)	Completed with Major Requirements	Take one class that overlaps with SSHA GE	Take one class that overlaps with SSHA GE	Take Bio 043 or ESS 001 or ESS 010 (Counts in major towards engr sci)	Take ENGR 180 (Counts in major towards Civil Core)	Completed with Major Requirements

Suggested Courses to overlap Social Science, Arts and Humanities courses and Intellectual Experience Badges

- **Social Science** – SPAN 050
- **Arts and Humanities** – CCST 060, ENG 032, GASP 055B, HIST 055, SPAN 060
- **Social Science, Arts and Humanities** – Any additional Social Science, Arts, and Humanities course listed on your Audit