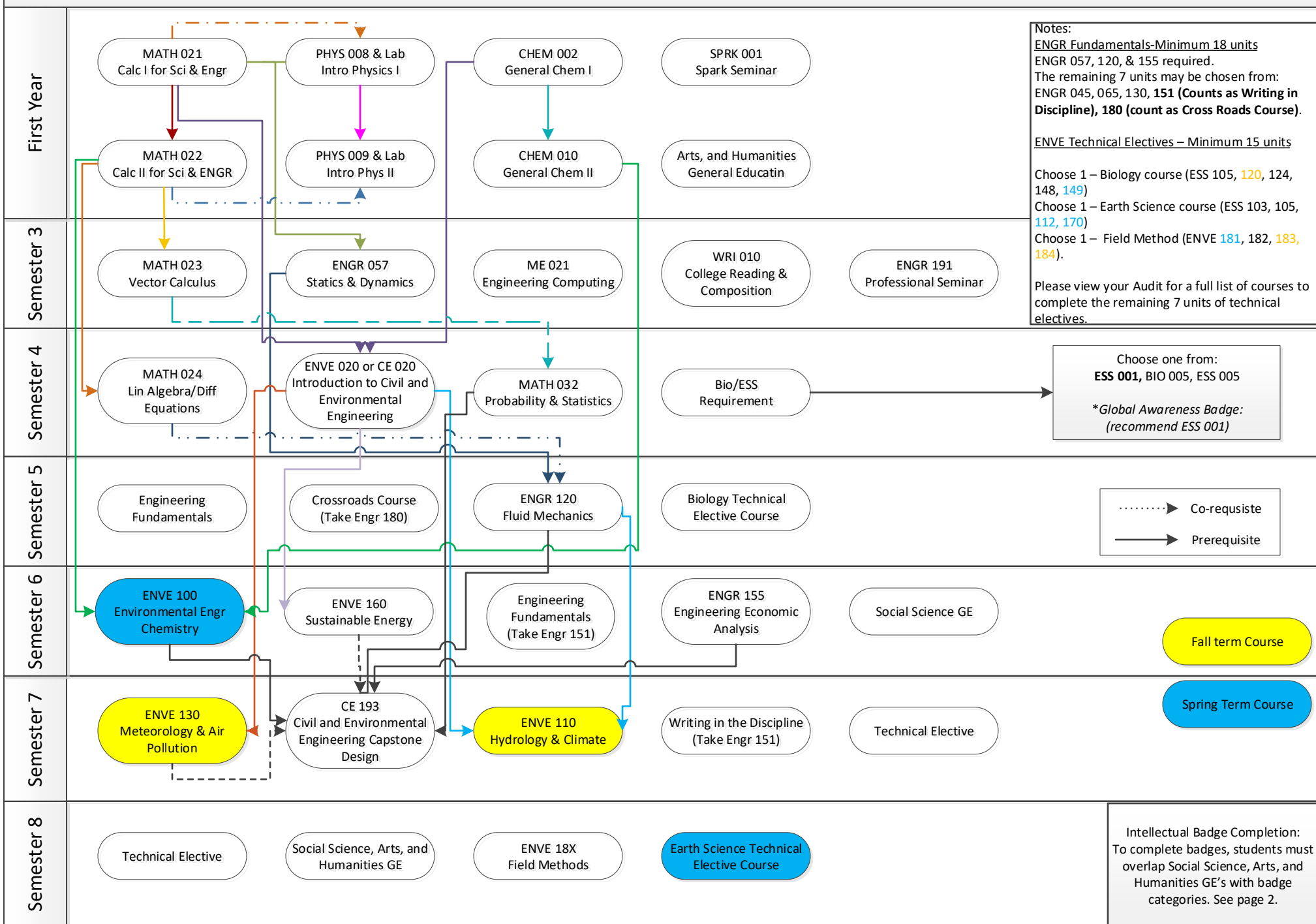


# Environmental Engineering – Program Map – Catalog year 2021-22

This guide is an unofficial document intended to be used for advising/course planning only. This document cannot be used to supersede or waive requirements listed in the UCM Catalog or updates to co/prerequisites unless approved by your advisor.



This guide is an unofficial document intended to be used for advising/course planning only. This document cannot be used to supersede or waive requirements listed in the UCM Catalog or updates to co/prerequisites unless approved by your advisor.

## General Education Requirements – PAY ATTENTION TO

**Crossroads** – There is a place holder for this course in the flow chart. We have planned Engr 180 as an Engr Fundamentals course. This course covers your crossroads requirement and some intellectual badges.

**Writing in the Discipline** – There is a place holder for this course in the flow chart. We have planned Engr 151 as an Engr Fundamentals course.

**AREA B: Social Science, Arts and Humanities.** Students must take three courses in the area of Social Science, Arts and Humanities. At least one course must be from Social Science and one course must be from Arts and Humanities.

- Social Science – There is a place holder for this course in the flow chart. You will need to select a course. Cross selection with Intellectual Experience Badges.
- Arts and Humanities – There is a place holder for this course. You will need to select a course. Cross with Intellectual Experience Badges.
- Social Science, Arts and Humanities – There is a place holder for this course. You will need to select a course. Cross with Intellectual Experience Badges.

**Intellectual Experience Badges** – One course can count for a maximum of two badges.

Intellectual Experience Badge Breakdown to Maximize Graduation Requirements & Required Courses									
ONE COURSE CAN SATISFY A MAXIMUM OF TWO BADGES									
	Scientific Method	Literary and Textual Analysis	Media and Visual Analysis	Quantitative and Numerical Analysis	Societies and Cultures of the Past	Diversity and Identity	Global Awareness	Sustainability	Ethics
ENVE	Completed with Major Requirements	Take one class that overlaps with SSHA GE	Take one class that overlaps with SSHA GE	Completed with Major Requirements	Take one class that overlaps with SSHA GE	Take one class that overlaps with SSHA GE	Take ESS 001 (counts in major towards engr sci)	Completed with Major Requirements	Completed with Major Requirements

### Suggested Courses to overlap Social Science, Arts and Humanities courses and Intellectual Experience Badges

- **Social Science** – SPAN 050
- **Arts and Humanities** – CCST 060, CRES 001, CRES 076A, CRES 072B, ENG 032, GASP 003, GASP 006, GASP 055B, GASP 060, GASP 072A, GASP 079A, HIST 055, PHIL 002, SPAN 060
- **Social Science, Arts and Humanities** – Select another class from the list above

Subject to availability and updating, always check your Audit.